

Revolutionising Waste Management for a Greener Australia



Converting Australia's Waste into Sustainable Power and Recycled Products

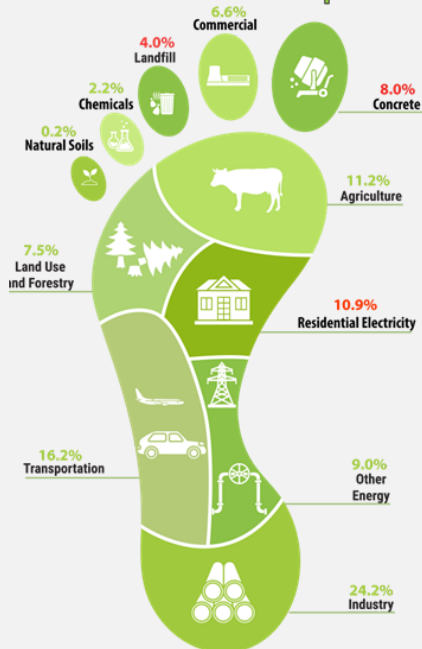
From landfill burden to continuous energy.

WtP Au commitment:
 ↓ Emissions, ↑ Energy
 from 75% of unrecyclable household waste[§]



From waste to watts, to a zero-carbon future

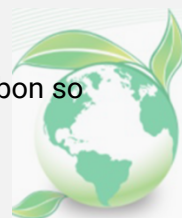
Global Carbon Footprint



Waste to Power Australia (WtP Au) is developing a world-leading Waste-to-Energy (WtE) and Carbon Capture, Storage & Utilisation (CCSU) facility designed to transform how Australian cities manage waste, generate energy, and reduce emissions.

Did you know the average Australian **contributes** to 14.4 tonnes of CO₂ emissions compared with High Income countries at 9.79 tonnes?* Over the years. Australians have contributed to over 1100 landfills of waste.* Australians generate about **540 kg of household-specific waste per capita** annually to landfills; and impact the ground water. The project will process **500 tonnes of waste per day** (167,000 tonnes per year), converting more than 75% of unrecyclable municipal solid waste into green continuous electricity and carbon-negative recycled construction materials**.

WtP Au offer solutions that capture, transform, and harness carbon so businesses can reduce their environmental carbon footprint.



*Global Carbon data based on various sources (2024) OurWorldinData.org/CO2-and-greenhouse-gas-emissions

**Based on the availability of appropriate mineral sources

Clean Energy, Clear Future: The Waste to Power Promise

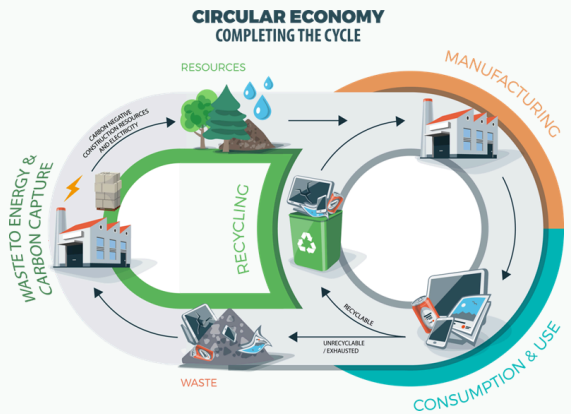
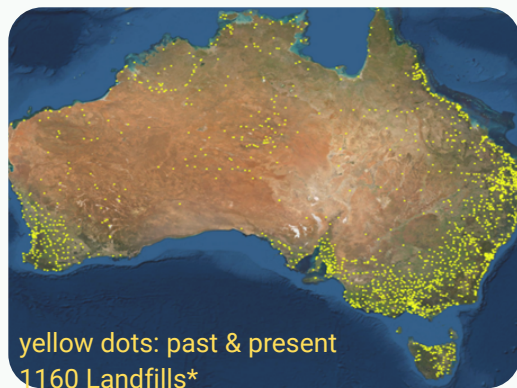
KEY OUTCOMES OF 500 TONNES WASTE PER DAY

- **Green, reliable electricity:** ~180,000 M kWh of sustainable continuous power annually, to **power** 28,500 homes.
- **Carbon-negative products:** Over 265,000 tonnes of recycled construction materials produced each year.
- **Major emissions reduction:** Up to 3.5 million tonnes of carbon, methane and other noxious gases avoided annually compared to landfill.
- **Ultra-clean operations:** Flue gas emissions far exceed international environmental standards.
- **Clean water:** Wastewater is treated and converted into **fresh water**.

COMPLETING THE CIRCULAR ECONOMY

The facility^{§§} closes the loop on waste by:

- Diverting more than 75% of MSW from landfill.
- Converting exhausted, unrecyclable waste into valuable reusable materials.
- Generating net-zero renewable electricity.
- Permanently capturing and storing carbon emissions.



ALIGNMENT WITH AUSTRALIA'S ENVIRONMENTAL GOALS***

The project accelerates progress toward national targets, including:

- 62-70% emissions reduction by 2035 (from 2005 levels)[§].
- Net-zero emissions by 2050.
- Reduce landfill reliance and convert 75% MSW up to 100% by 2030^{§§}

TECHNOLOGY LEADERSHIP

- **Waste to Energy:** Advanced Chinese, Danish and German technology refined for the cleanest emissions and lowest environmental impact.
- **Carbon Capture:** incorporate CCSU technology from a leading U.S. provider, enabling CO₂ storage and carbon-negative product creation.

ENVIRONMENTAL & SOCIAL BENEFITS

Environmental

- Eliminates methane-producing landfill waste not just CO₂
- Reduces emissions from landfill, concrete production, and residential electricity.
- Reduce impact on ground water
- Produces clean water and carbon-negative materials.

Social

- Creates hundreds of jobs for the long-term[§].
- Cleans up communities and reduces environmental health risks.
- Supports a healthier, more sustainable urban environment.

ECONOMIC STRENGTH & INVESTMENT STABILITY

- **Promotes diversified revenue streams[§]:** electricity, waste processing fees, carbon-negative products, and CCSU-related value.
- **Long-term stability:** 30+ year plant lifespan with reliable baseload output.
- **Innovative technology[§]:** backed by global leaders in WtE and CCSU.

***<https://www.climatecouncil.org.au/resources/climate-targets-in-australia-fact-sheet/>

[§] Australia's 2035 Nationally Determined Contribution

^{§§} information available upon request from WtP Australia management



Contact: Kenoll Wilson
Waste to Power Australia Pty Ltd
27/101 Collins Street Melbourne 3000
61 3 9221 6132
www.wastetopoweraustralia.com.au

